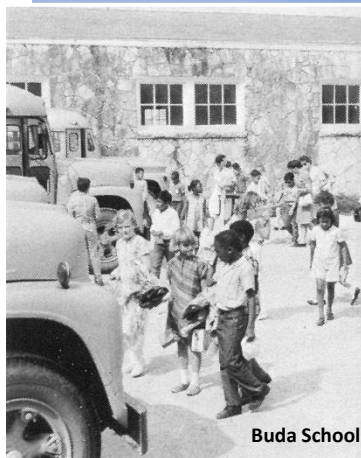




# BOND 2017

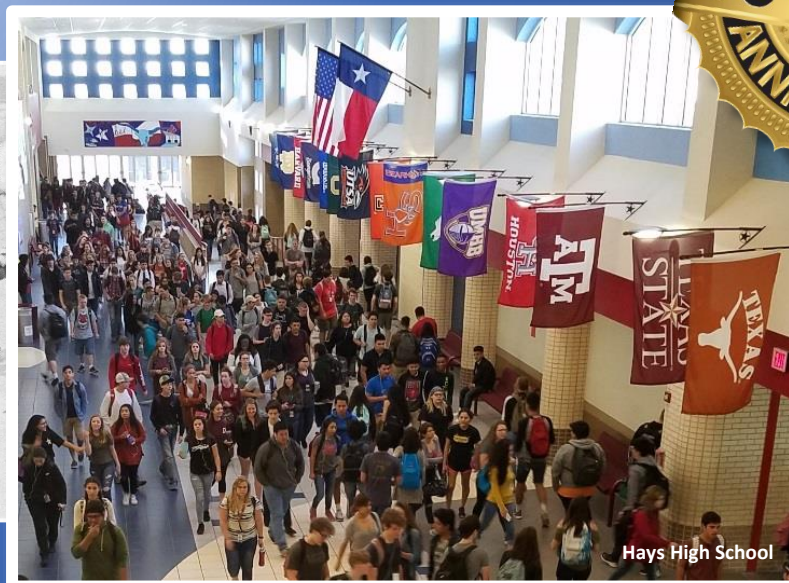
Hays Consolidated Independent School District



Buda School

1967

1,157 students



Hays High School

2017

19,260 students



High School #3

2067

41,700 students  
*(projected by district demographer)*

ELECTION DAY IS MAY 6, 2017

[www.hayscisid.net/bond2017](http://www.hayscisid.net/bond2017)



# The Hays CISD 50<sup>th</sup> Anniversary - 2017 Bond Initiative

May 6, 2017, which is Election Day, is also the 50<sup>th</sup> anniversary of the consolidation election that formed the Hays Consolidated Independent School District. Originally, the Kyle, Buda, and Wimberley school districts joined to create Hays CISD. The vote in 1967 also included the construction of a new high school – the original Hays High School – which opened with 268 students.

The newly formed school district had a total student population of 1,157 students. Fifty years later, the district employs about that many teachers for a student population of almost 20,000. Growth is expected to continue in Hays CISD. This brochure summarizes the facilities projects proposed in the 2017 bond election on May 6, 2017. If approved by voters, these projects would affect every campus and are aimed at providing the infrastructure needed to meet the current student enrollment and the expected growth in enrollment.

## PROPOSITION 1

### New School Construction

<b>High School #3</b>	Current high school student enrollment of 5,454 exceeds the 4,600 enrollment capacity of the existing high schools. Construction of a new high school campus of approximately 413,500 would provide for the enrollment of both the excess capacity, and an additional 1,400 students. Construction estimate is \$103,375,000 (\$250 per SF). Total cost of project includes all necessary furniture, equipment, site infrastructure, architecture costs, and other fees. Any bond savings from a reduced cost of this project will be used to pay down existing debt, which returns the money to the taxpayers.	<b>\$ 122,000,000</b>
<b>Elementary School #14 for Growth (High Road Location)</b>	Construction of elementary campus with approximately 115,000 SF, plus site work. Enrollment projections exceed capacity of existing elementary schools by 2018. Construction estimate is \$28,750,000 (\$250 per SF). Total cost of project includes all necessary furniture, equipment, site infrastructure, architecture costs, and other fees. Any bond savings from a reduced cost of this project will be used to pay down existing debt, which returns the money to the taxpayers.	<b>\$ 33,925,000</b>
<b>Elementary School #15 to Replace Buda Elementary School</b>	Construction of elementary campus with approximately 115,000 SF, plus site work. New campus to replace Buda Elementary School. District will preserve the historic part of current Buda Elementary campus and use the facility for another purpose. Construction estimate is \$28,750,000 (\$250 per SF). Total cost of project includes all necessary furniture, equipment, site infrastructure, architecture costs, and other fees. Any bond savings from a reduced cost of this project will be used to pay down existing debt, which returns the money to the taxpayers.	<b>\$ 33,925,000</b>
<b>PROPOSITION 1 TOTAL</b>		<b>\$ 189,850,000</b>

## PROPOSITION 2

### Student Program Facilities Upgrades & Equipment: Career & Technical Education

<b>CTE: HHS Culinary Arts Addition</b>	Construction of a new facility of approximately 2,500 SF, plus equipment. Commercial kitchen at HHS to provide equity with LHS program and proposed HS#3.	<b>\$ 1,888,000</b>
<b>CTE: LHS Auto Tech</b>	Construction of a new facility of approximately 6,000 SF, plus equipment. Provides equity with HHS and proposed HS#3 with a five (5) bay instructional facility.	<b>\$ 3,127,000</b>
<b>CTE: HHS Auto Tech Expansion</b>	Adds 1 bay to existing 4 bay facility. Provides equity with proposed HS#3 program.	<b>\$ 100,000</b>
<b>CTE: HHS Vet Tech</b>	Construction of appx. 2,000 SF, plus equipment, to be housed in renovated HHS band hall.	<b>\$ 550,000</b>
<b>CTE: LHS Vet Tech</b>	New facility would require approximately 2,000 SF, plus equipment.	<b>\$ 1,764,400</b>
<b>CTE: HHS Broadcasting Studio Remodel</b>	Remodel existing square footage within campus, appx. 1,600 SF, plus equipment, to be housed in renovated HHS band hall.	<b>\$ 650,000</b>
<b>CTE: LHS Broadcasting Studio</b>	Remodel existing square footage within campus, appx 1,600 SF, plus equipment.	<b>\$ 590,000</b>
<b>CTE: HHS &amp; LHS STEM</b>	Equipment for engineering classes.	<b>\$ 236,000</b>

*(proposition 2 continued on next page)*



## 2017 Bond Process and Timeline

Bond proposals in Hays CISD begin and end with the community. Voters collectively decide whether to approve projects presented in a bond. In September 2016, the Board of Trustees for Hays CISD empaneled a citizens' Growth Impact Committee (GIC) to assess growth and needs in the district, and to make a recommendation to the Board regarding a bond. Following acceptance of the GIC's recommendation, the Board held public forums to allow for additional public comment and adjusted the proposal accordingly. On February 13, 2017, the Board adopted an election order calling for a May 6, 2017, bond election.

PROPOSITION 2 (continued)		
<b>Student Program Facilities Upgrades &amp; Equipment: Fine Arts</b>		
<b>Fine Arts: Music Building replacement at HHS</b>	Construction of a new facility of approximately 18,000 SF to serve students in band, choir, and other music programs. Provides equity with LHS and proposed HS#3.	<b>\$ 8,480,000</b>
<b>Student Program Facilities Upgrades &amp; Equipment: Libraries</b>		
<b>Libraries: Upgrades</b>	Upgrade libraries, purchase furniture, technology, and makerspaces districtwide. Significant upgrades to WMS, BMS, & KES libraries.	<b>\$ 978,000</b>
<b>Libraries: Books</b>	Update and refresh aging library collections districtwide.	<b>\$ 822,000</b>
<b>Student Program Facilities Upgrades &amp; Equipment: Athletics</b>		
<b>Athletics: Bleachers, lights and scoreboard DMS</b>	Bleachers, field lighting, and scoreboard for athletic field at DMS. Campus does not currently have these items. Provides equity with other middle schools.	<b>\$ 454,000</b>
<b>Athletics: Bleachers, lights and scoreboard WMS</b>	Bleachers, field lighting, and scoreboard for athletic field at WMS. Campus does not currently have these items. Provides equity with other middle schools.	<b>\$ 473,000</b>
<b>Athletics: Bleachers and Press Box LHS</b>	Adds additional bleachers at LHS (500 seats behind the existing bleachers) and raises the press box for better viewing. Provides equity with HS#3.	<b>\$ 345,000</b>
<b>Athletics: Baseball/Softball complex at HHS</b>	Combined athletic complex for baseball and softball on HHS campus. Provides an on-campus home to programs, safety upgrades, and equity with LHS and proposed HS#3.	<b>\$ 3,600,000</b>
<b>Transportation</b>		
<b>Transportation Facility (including print shop)</b>	Construction of appx. 55,000 SF facility for districtwide transportation operations, plus site work (\$15,362,000) [Includes print shop (\$700,000) and replaces I-35 site.]	<b>\$ 16,062,000</b>
<b>Facilities Maintenance &amp; Improvements</b>		
<b>Facility Assessment: District-wide Improvements</b>	Select, prioritized recommendations from Facility Needs Assessment study (multiple building systems, including fire and intrusion alarms, and DMS science labs). See list of affected campuses on the next page of this brochure.	<b>\$ 9,413,479</b>
<b>Facility Assessment: Roofing and HVAC</b>	Select, prioritized recommendations from Facility Needs Assessment study (roofing projects and HVAC replacements). See list of affected campuses on the next page of this brochure.	<b>\$ 9,304,921</b>
<b>Technology</b>		
<b>Technology, infrastructure</b>	District-wide upgrades to cabling and other projects.	<b>\$ 1,012,200</b>
<b>Security/Surveillance</b>		
<b>Security/Surveillance</b>	Replace analog security cameras district-wide.	<b>\$ 300,000</b>
<b>PROPOSITION 2 TOTAL</b>		<b>\$ 60,150,000</b>

Any bond savings realized from a reduced cost of the new school construction projects will be used to pay down existing debt, which returns the money to the taxpayers. Further, upon completion of all other projects, the total savings will also be used to pay down existing debt.

# Tax Rate Implications from This Bond

Because of increased bond financial capacity in Hays CISD, approval of the bond measure(s) would not require the school board to change or increase the current tax rate. This chart illustrates the effect on homeowners.

**Current Hays CISD Tax Rate per \$100 of Taxable Property Value:**  
**\$1.04 (Maintenance & Operations) + \$0.4977 (Interest & Sinking) = \$1.5377**

**No tax rate change proposed or required for this bond**

Taxable Value of Home (After Exemptions)	\$100,000	\$200,000	\$300,000
Tax Rate Increase of \$0.00	\$0.00	\$0.00	\$0.00
Annual Increase*	\$0.00	\$0.00	\$0.00
Monthly Increase*	\$0.00	\$0.00	\$0.00

*\*Based on rate change. Actual taxes paid depend on the appraised value of taxable property. An increase or decrease in taxable property value, even with no change in the tax rate, would result in an increase or decrease in the actual amount of taxes paid. The Hays CISD Board of Trustees sets the tax rate for the district annually.*

## Roof Repairs & Replacements (Included in Prop. 2)

**Elementary Schools:** Blanco Vista, Camino Real, Carpenter Hill, Elm Grove, Fuentes, Hemphill, Kyle, Negley, Pflugger, Science Hall, Tobias, Tom Green

**Middle Schools:** Barton, Chapa, Dahlstrom, Simon, Wallace

**High Schools:** Hays, Lehman, Live Oak Academy, Impact

**Other Facilities:** Shelton Stadium, Performing Arts Center, Administration

## HVAC Repairs & Replacements (Included in Prop. 2)

**Elementary Schools:** Blanco Vista, Camino Real, Elm Grove, Fuentes, Hemphill, Kyle, Negley, Tom Green

**Middle Schools:** Barton, Chapa, Dahlstrom, Wallace

**High Schools:** Hays, Lehman, Live Oak Academy

**Other Facilities:** Shelton Stadium, Maintenance Facility, Administration

## Major Maintenance (Included in Prop. 2)

*Ceilings, Communications, Doors, Electrical, Elevators and Lifts, Equipment, Exterior Walls, Floors, Foundations, Furnishings and Casework, Hardscape, Landscape, Metals, Plumbing, Room Modifications, Security, Soffits, Sprinklers and Smoke Alarms, Thermal Insulation, Sealants, and Playgrounds*

**Elementary Schools:** Blanco Vista, Carpenter Hill, Elm Grove, Fuentes, Hemphill, Kyle, Negley, Science Hall, Tobias, Tom Green

**Middle Schools:** Barton, Chapa, Dahlstrom, Simon, Wallace

**High Schools:** Hays, Lehman, Live Oak Academy, Impact

**Other Facilities:** Maintenance Facility, Performing Arts Center, Administration, Food Services

## Projected Student Enrollment in Hays CISD

Students	Current Capacity	Current Enrolled	2017-2018	2018-2019	2019-2020	2020-2021	2021-2022	2022-2023
Elem	9,766	9,273	9,446	9,537	9,676	9,904	10,247	10,678
Middle	4,950	4,482	4,646	4,762	4,909	5,062	5,142	5,177
High	4,600	5,454	5,711	6,019	6,234	6,398	6,604	6,864

*Based on updated 3<sup>rd</sup> Quarter 2017 campus enrollment projections. Templeton Demographics.*



# When & Where to Vote

Early voting runs weekdays April 24, 2017, through May 2, 2017 from 8:00 a.m. and 5:00 p.m.

Extended early voting hours: Monday, April 24, 2017, and Monday, May 1, 2017, from 7:00 a.m. to 7:00 p.m. at both locations and Saturday, April 29, 2017, from 10:00 a.m. to 2:00 p.m. at Buda Elementary School.

Election Day is Saturday, May 6, 2017, with polls open from 7:00 a.m. to 7:00 p.m.

**Voter Registration Deadline is April 6, 2017**

### Early Voting (All Districts)

Hays CISD Administration  
 21003 IH 35  
 Kyle, TX 78640

### Early Voting (All Districts)

Buda Elementary (Upper Campus)  
 300 San Marcos  
 Buda, Texas 78610

### Election Day (District 1)

Hays CISD Administration  
 21003 IH 35  
 Kyle, TX 78640

### Election Day (District 2)

Tobias Elementary School  
 1005 East FM 150  
 Kyle, Texas 78640

### Election Day (District 3)

Chapa Middle School  
 3311 Dacy Lane  
 Kyle, Texas 78640

### Election Day (District 4)

Hays Hills Baptist Church  
 1401 North FM 1626  
 Buda, Texas 78610

### Election Day (Districts 5 A & B)

Wallace Middle School  
 1500 West Center Street  
 Kyle, Texas 78640